

GYR™

QUICK START GUIDE



File View Help

YEAR	MAKE	MODEL	
FRONT	SUBMODEL	REAR	SUBMODEL
SPEC	INITIAL	AS CUT	STATUS
LAT. RUNOUT: No Data			?
MACHINE-TO: No Data			?
DISCARD: No Data			?

LEFT FRONT LROTK LF REAR LROTK

PRINT NOT CUT NOT CUT

BEGIN NOT CUT L/R R/R NOT CUT

Disconnected VIN

SuperTech
SCAN FOR YOUR COPY OF THE SUPERTECH APP
WWW.PROCUT.COM

VEHICLE MUST BE IN NEUTRAL
TRACTION CONTROL MUST BE OFF

PRO-CUT
HYDRAULIC SHEAR

DRIVE

READY TO WORK

- READY
- ADJUSTING
- TRY AGAIN
- READY TO CUT
- OFFHOOK

START
RESET

PRO-CUT
1-800-570-6660

PRO-CUT
1-800-570-6660

PRO-CUT
50-7A

GYRTM

QUICK START GUIDE

P · 800.543.6618

F · 603.298.8404

info@procutusa.com

www.procutusa.com

SYSTEM REQUIREMENTS

What's Required

- Internet connection with configurable firewall.
- Wi-Fi enabled network, compatible with 802.11b/g/n/ac, with enough range to cover the areas where the GYR Rotor Matching System will be used.
- A printer that the GYR Rotor Matching System will print to that is accessible from the Wi-Fi network.

GYR Tablet PC Setup

- GYR Tablet PC needs to be setup on Wi-Fi network.
- GYR Tablet PC needs to have a printer added and set as default.

Network Modifications

- Open ports for GYR Tablet PC MAC or IP address in firewall:
 - HTTPS: TCP Port 443 (for result reporting)
 - HTTP: TCP Port 80 (for Pro-Cut main support site page access)
- White-list all procutusa.com domains. This will allow result viewing, software and database update capabilities.

Optional

- The GYR tablet comes with Windows 10 Home which can be upgraded to Windows 10 Pro and placed on the local domain.
- Pro-Cut offers technical support through “Log Me In,” which allows Pro-Cut Service limited access to local computer networks.

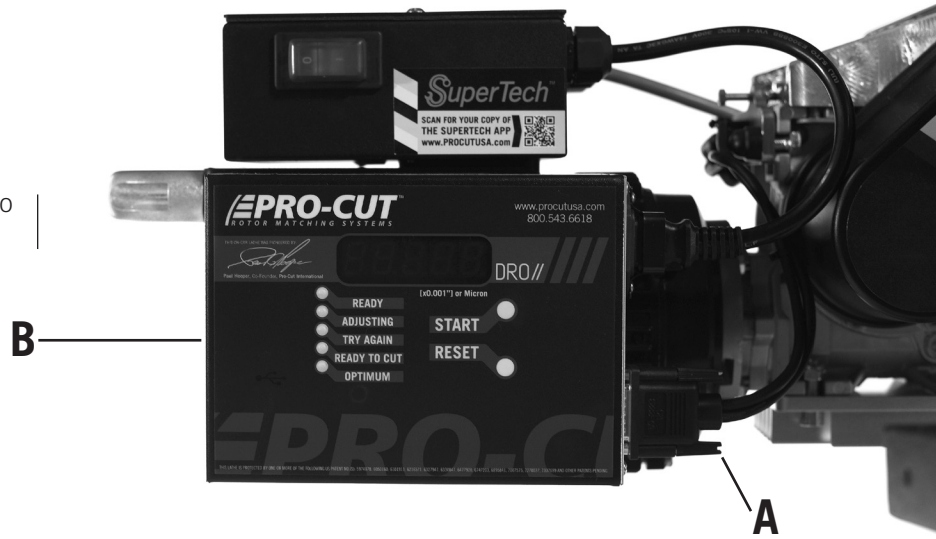
****For Tech Support: Call 1.800.543.6618 and Press #2 for Service!***

SET UP

Confirm Electrical Connections on the Lathe

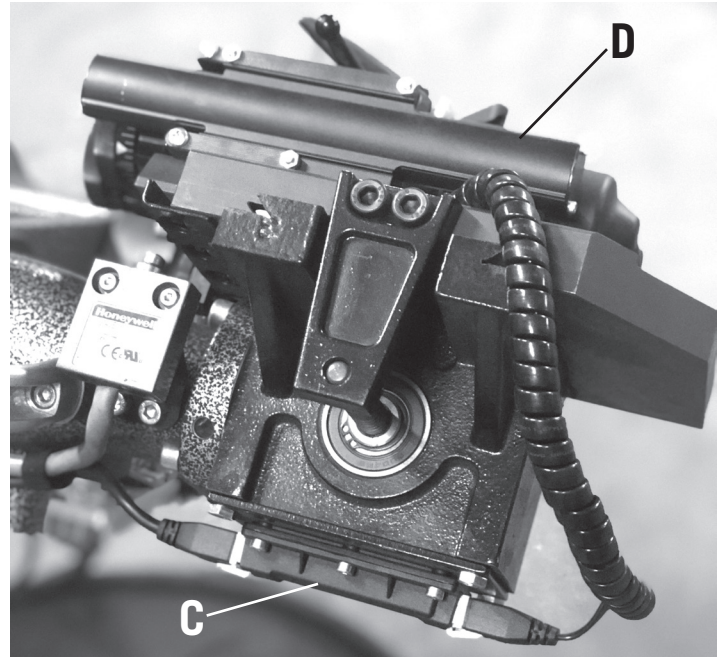
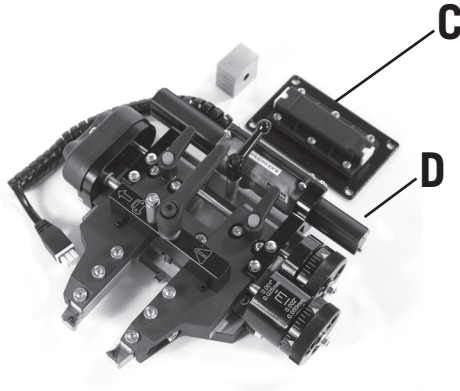
1. Connect the 15 pin wiring harness to the computer box mounted on the lathe.

Wiring harness (A) connected to the lathe computer box (B).



2. Connect transducer to the GPM.

Transducer (C) connected
to GPM (D).



SET UP / CONTINUED

Confirm Electrical Connections on the Lathe · Continued

3A. Plug in the lathe and watch the DRO screen. It should cycle through 5 images: bT, LA107, DC076, GP052, and READY. (Numbers following the LA/DC/GP prefixes will change with future software updates.)



Screen shows *bT*

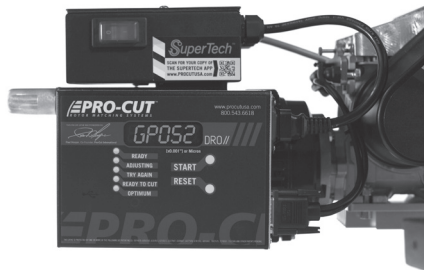


Screen shows *LA107*

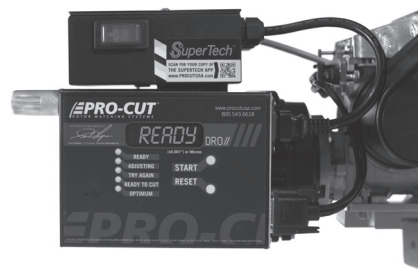


Screen shows *DC076*

Confirm Electrical Connections on the Lathe - Continued

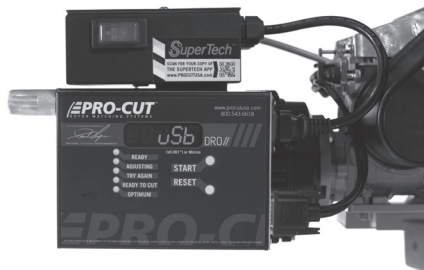


Screen shows GP052

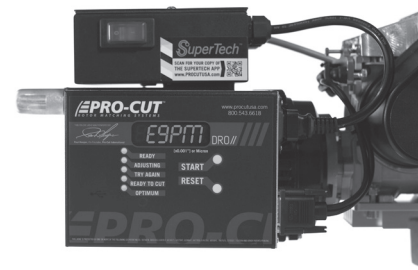


Screen shows READY

3B. If **uSb** or **E9PM** show up during the cycle, please call Pro-Cut service ASAP: 1-800-543-6618.



Screen shows uSb



Screen shows E9PM

SET UP / CONTINUED

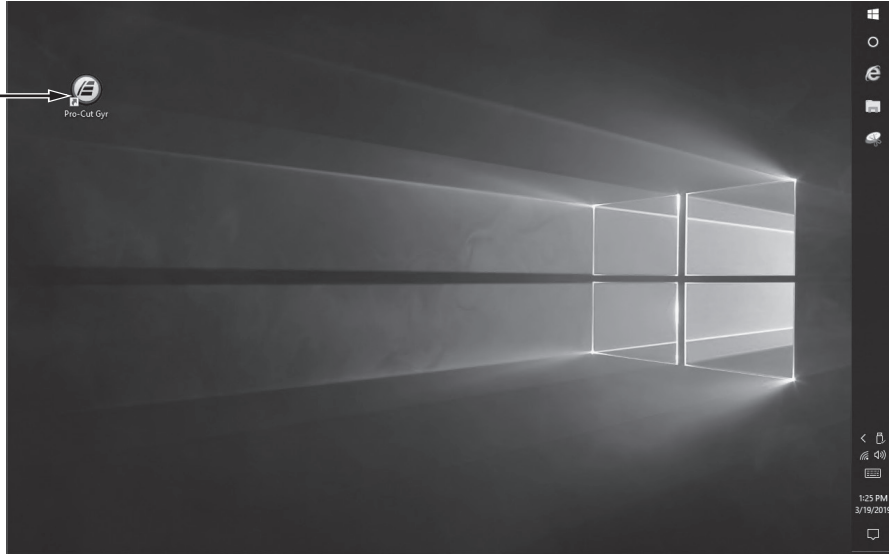
Set-up the Tablet PC and Network

1. Turn on the tablet PC. The password for technician is 1234.
2. Connect the tablet to the Internet through Wi-Fi.
3. Have shop IT personnel add your network printer and set as default.
(See system requirements document.)
4. Verify you can get GYR updates by connecting to www.procutusa.com.

LAUNCH THE SOFTWARE

1. Launch the GYR application by double clicking on the GYR icon.

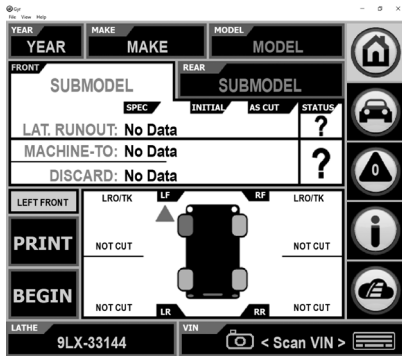
GYR Icon



LAUNCH THE SOFTWARE / CONTINUED

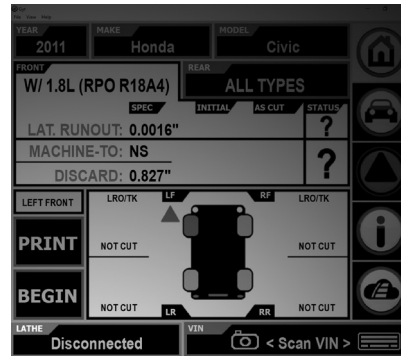
- Be sure the lathe is plugged in. The GYR app will automatically search for and connect with the lathe showing the message “Please wait while lathe is being initialized”. Once lathe and tablet are connected the lower left of the GYR screen will shift from gray colored “Disconnected” to show the serial number of the lathe in yellow. If lathe does not connect, check to be sure the tablet Bluetooth is on.

GYR Screen Connected



Serial No. Shown in Yellow Means Lathe Connected to Computer.

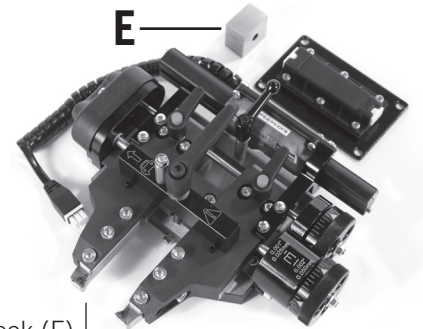
GYR Screen Disconnected



NO Serial No. Shown Means Lathe Disconnected from Computer.

3. As prompted, enter the shop information.
4. From the SETUP/INFO page, choose CALIBRATE LATHE, and using the 0.8" gauge block included in the tool kit, follow the on-screen instructions to calibrate the lathe.

Calibrating the Lathe



0.8" Gauge Block (E)

LAUNCH THE SOFTWARE / CONTINUED

5. Tap YEAR in the top left of the GYR screen. If only 1980 and 1981 show as options, the tablet has not downloaded vehicle data. Be sure there is a WiFi connection and restart the tablet.

Choose YEAR of Vehicle



6. GYR is now ready to use.

****For Tech Support: Call 1.800.543.6618 and Press #2 for Service!***

CALIBRATION

CALIBRATE THE SYSTEM WHEN YOU ROTATE BITS

To calibrate, go to the SETUP/INFO screen, choose CALIBRATE LATHE and follow the on-screen instructions.

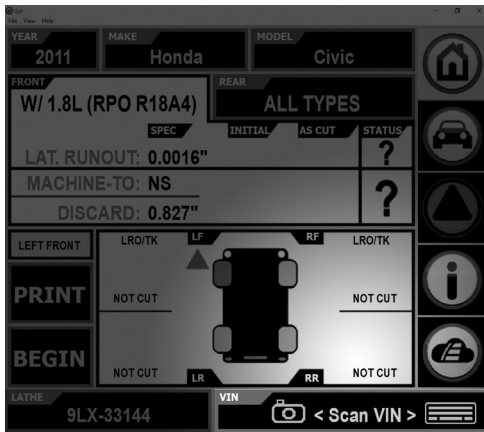
Calibrating the Lathe



VEHICLE SELECTION

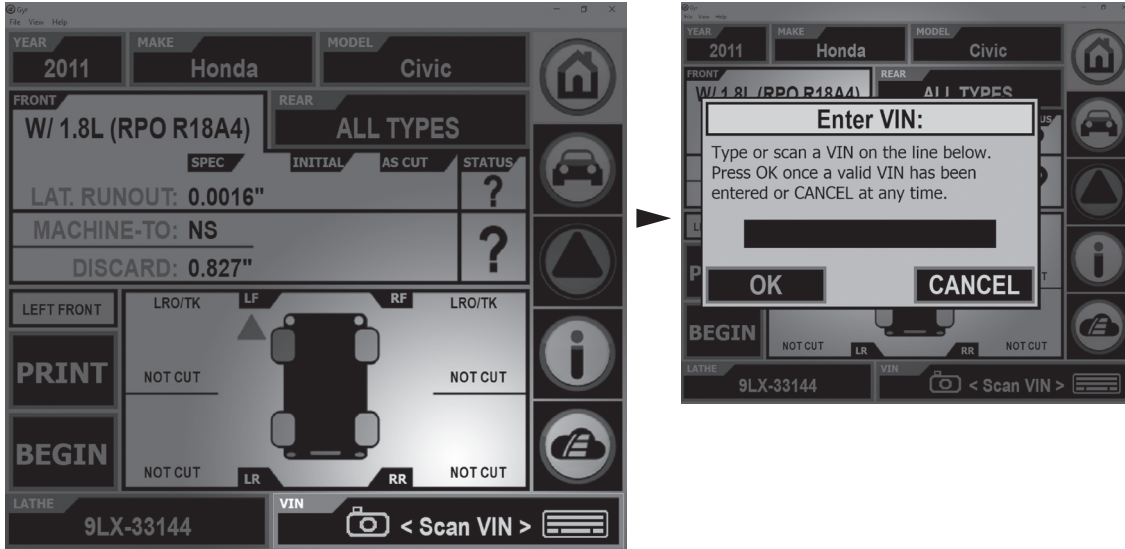
SELECT THE VEHICLE BY ONE OF FOUR METHODS

- A. Scan the VIN code with a barcode scanner. (This requires the optional wireless Bluetooth scanner.)
- B. Scan the VIN code with the tablet's camera. (Be sure the tablet rotation is locked before beginning. Tap the camera icon at the bottom of the screen.)



▲
Camera Icon

C. Type the VIN code with the on-screen keyboard. (Tap the keyboard icon, at the bottom of the screen, enter VIN dialogue box will open.)



Keyboard Icon

VEHICLE SELECTION / CONTINUED

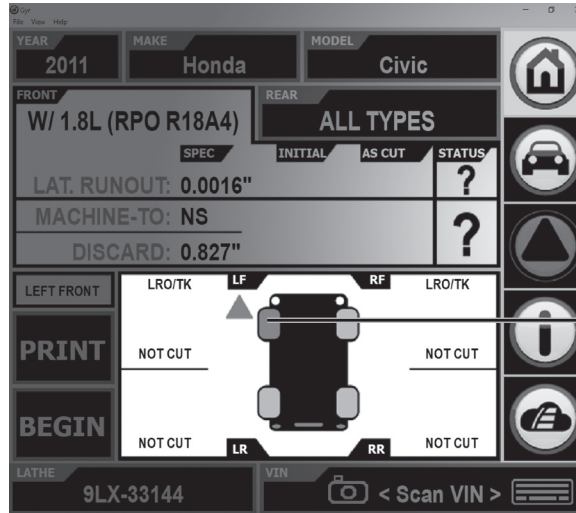
D. Select the YEAR/MAKE/MODEL. (Use the drop-down menus to select a vehicle. This option does not capture the VIN.)



Selecting Year

BE SURE TO SELECT THE CORRECT ROTOR

Select the rotor being serviced by tapping the vehicle icon so the appropriate wheel turns red. This insures that the correct specs are shown and that finished data is attached to the rotor that was serviced.



Selected Wheel Shown in Red

CAPTURING PRE-CUT THICKNESS AND RUN-OUT

After compensating the lathe and as cutting depth is set, follow the on-screen instructions to capture the pre-cut rotor thickness and run-out. With lathe on (rotor spinning) advance the near cutting arm until the bit JUST touches the high point on the rotor. Tap the first MARK button on screen.

Advance the cutting arm further until the bit just marks a complete scribe around the entire rotor and then tap the second MARK button on the screen.

The difference between these two points is the pre-cut rotor run-out. Now advance the far cutting arm until it just touches the rotor. Tap the third and final MARK button which will give the overall thickness of the rotor.



UNDERSTANDING GYR CUT DETECTION

- It takes the GYR system 16 seconds to determine when a cut is in progress.
- There must be 60 seconds of uninterrupted cutting for the GYR to recognize that the rotor has been machined. “Partial” cuts (those made for less than 60 seconds) will not be saved.
- It takes the GYR system 8 seconds to determine when the cut has ended.
- Cutting through deep scratch cuts for longer than 8 seconds could end the cut cycle prematurely. This could result in the cut not being saved.



Pro-Cut International, LLC
10 Technology Drive #4
West Lebanon, NH 03784

P. 800.543.6618 / 603.298.5200
F. 603.298.8404
E. info@procutusa.com

Global inquiries please see:
www.procutusa.com